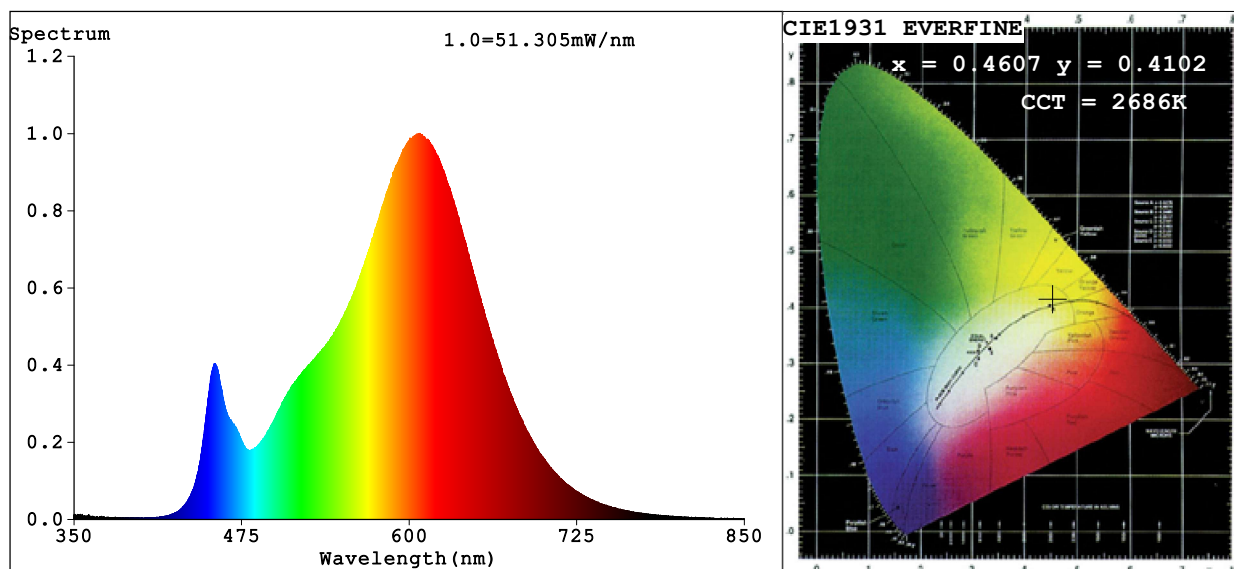


Spectrum Test Report



Color Parameters:

Chromaticity Coordinate: $x=0.4607$ $y=0.4102$ $u'=0.2632$ $v'=0.5273$
CCT=2686K (Duv=-0.0002) Dominant WL:Ld =584.3nm Purity=61.4%
Ratio:R=25.4% G=72.2% B=2.4%; Peak WL:Lp=607.9nm FWHM=112.1nm
Render Index:Ra=82.5 CRI=77.8 TM30:Rf=82 Rg=95
R1 =82 R2 =93 R3 =94 R4 =80 R5 =82 R6 =93 R7 =80
R8 =57 R9 =8 R10=85 R11=79 R12=76 R13=84 R14=97 R15=73

Photo Parameters:

Flux = 2301 lm Eff. : 145.99 lm/W Fe = 7.141 W

Electrical parameters:

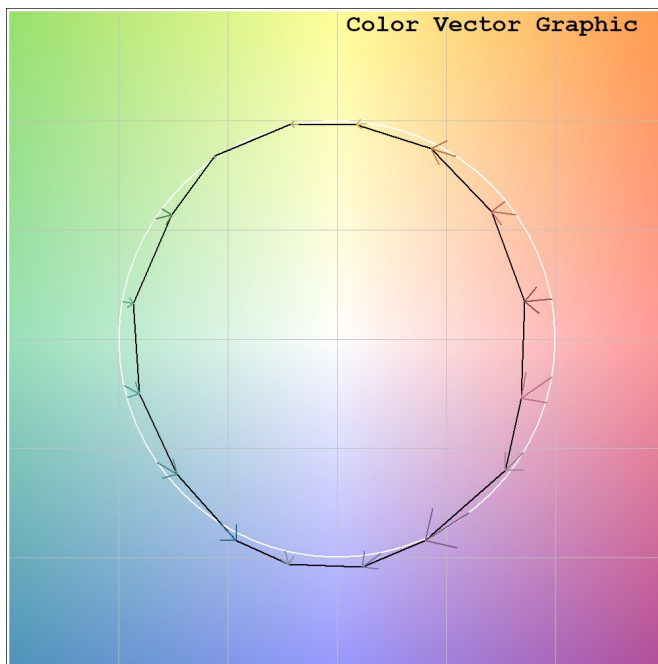
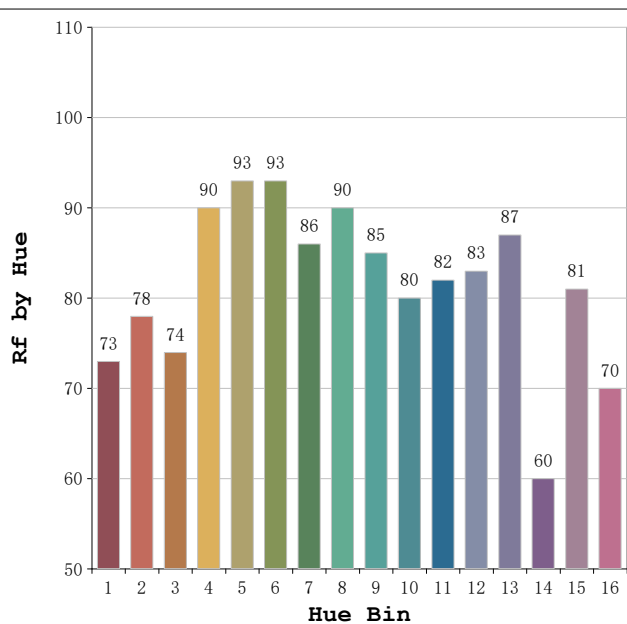
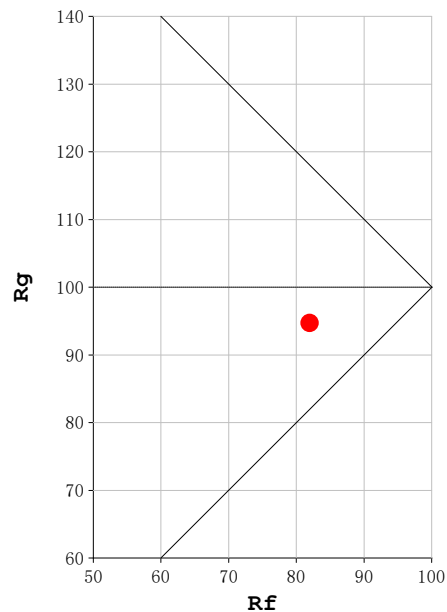
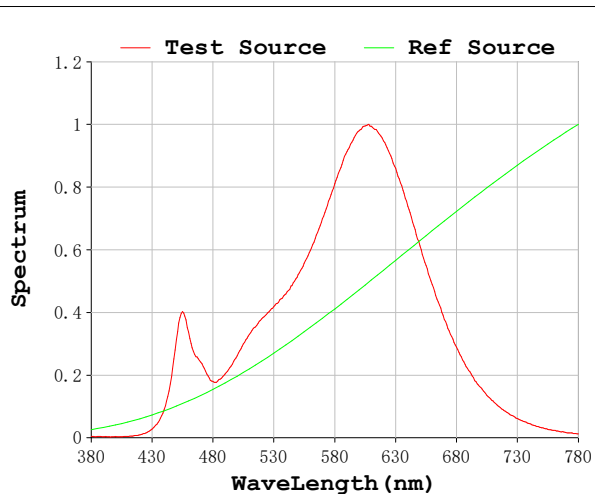
V = 23.998 V I = 0.6569 A P = 15.76 W PF = 1.000

Status: Integral T = 545 ms Ip = 54918 (84%)

Model:Ecoled Roll to roll
Tester:Sergio Carneros
Temperature:20Deg
Manufacturer:Luz Negra

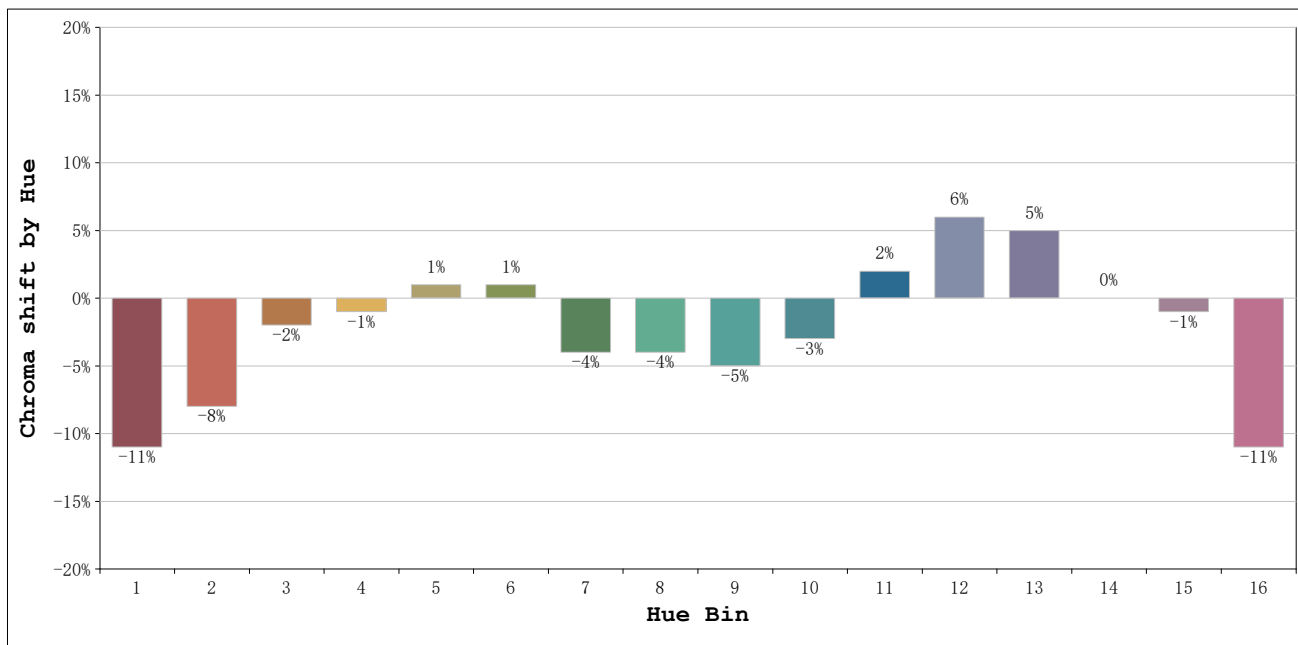
Number: 31.271
Date:2025-06-17 08:09:25
Humidity:50%
Remarks:100cm de tira flexible

Rf: 82 **CCT: 2686 K** **u': 0.2632**
Rg: 95 **Duv: -0.0002** **v': 0.5273**



Model:Ecoled Roll to roll
 Tester:Sergio Carneros
 Temperature:20Deg
 Manufacturer:Luz Negra

Number: 31.271
 Date:2025-06-17 08:09:25
 Humidity:50%
 Remarks:100cm de tira flexible



			Graphic shift(%)	
Hue Bin	Hue Angle	Rf	Chroma	Hue
1	0.0° - 22.5°	73	-11	1
2	22.5° - 45.0°	78	-8	8
3	45.0° - 67.5°	74	-2	11
4	67.5° - 90.0°	90	-1	4
5	90.0° - 112.5°	93	1	3
6	112.5° - 135.0°	93	1	0
7	135.0° - 157.5°	86	-4	-5
8	157.5° - 180.0°	90	-4	0
9	180.0° - 202.5°	85	-5	5
10	202.5° - 225.0°	80	-3	10
11	225.0° - 247.5°	82	2	10
12	247.5° - 270.0°	83	6	3
13	270.0° - 292.5°	87	5	-9
14	292.5° - 315.0°	60	0	-23
15	315.0° - 337.5°	81	-1	-10
16	337.5° - 360.0°	70	-11	-11

Model:Ecoled Roll to roll
 Tester:Sergio Carneros
 Temperature:20Deg
 Manufacturer:Luz Negra

Number: 31.271
 Date:2025-06-17 08:09:25
 Humidity:50%
 Remarks:100cm de tira flexible